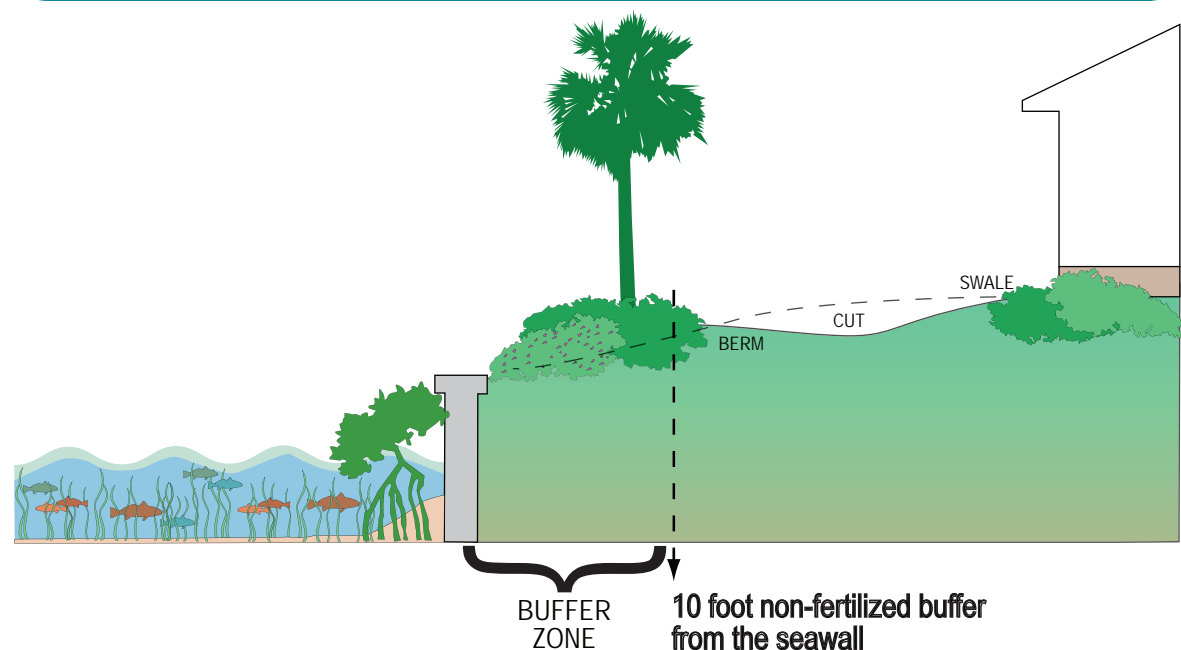
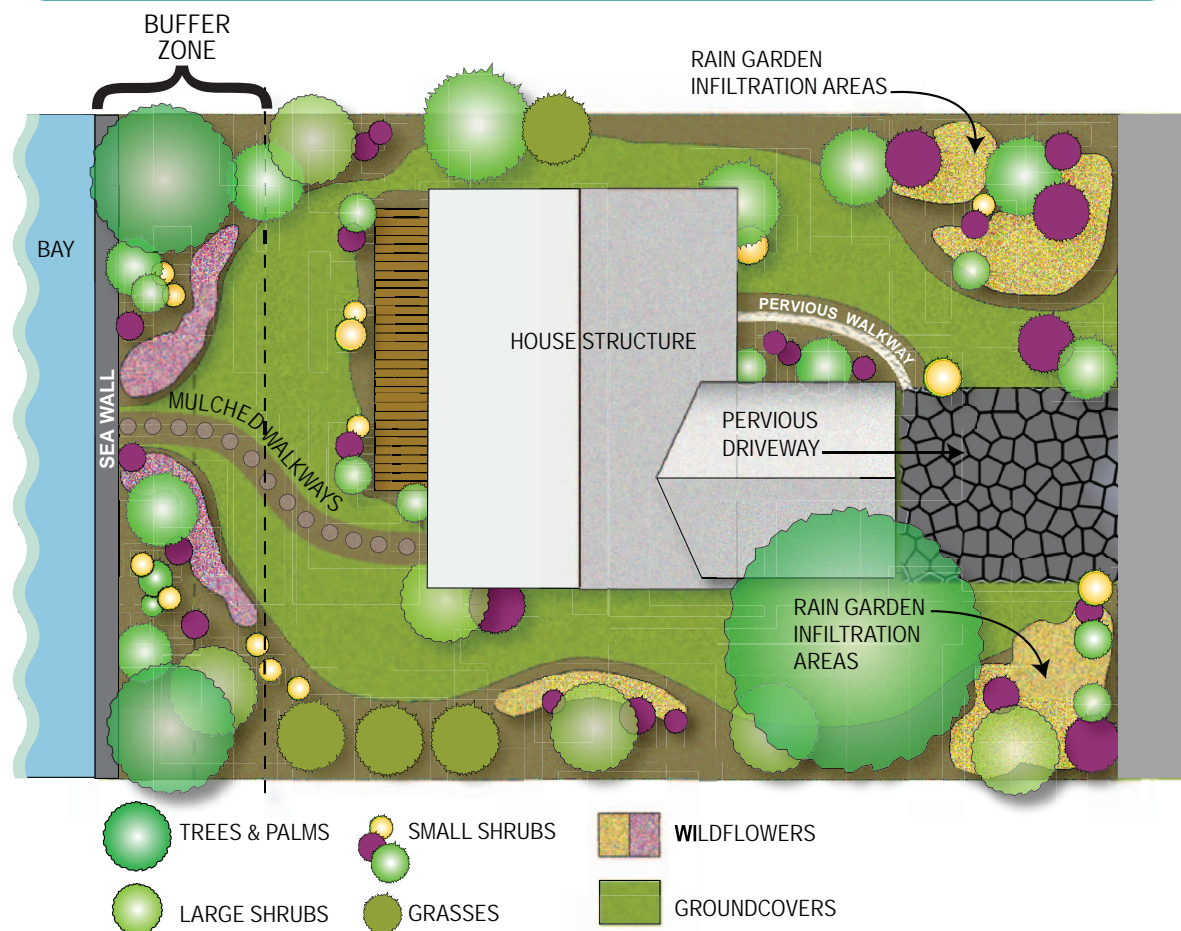


Earth Shaping to Prevent Runoff



Example of a Bay-Friendly Landscape



Shoreline Landscaping Alternatives

Sarasota County Fertilizer and Landscape Management Code, Ordinance 2007-062

Living on the water's edge is a beautiful and special place to live. This brochure provides a landscaping example with a sampling of plants that could be used in the required (10 feet) fertilizer free zone and (6 feet or greater) recommended low maintenance (no irrigation or fertilizer after establishment) vegetated buffer zone along the bayfront. These plants may be used as an alternative to or in combination with an existing turf grass buffer. The plants were selected as an example to provide an attractive, salt-tolerant, bay-friendly, commercially available way to beautify the landscape while controlling erosion and reducing the amount of nutrients, fertilizer and pesticides entering our bays.

Remember to protect and encourage the establishment of mangroves seaward of your seawall.

For more information on additional shoreline plants or where to obtain them, contact

Sarasota Bay Estuary Program

www.sarasotabay.org 941.955.8085

Florida Native Plant Society

www.fnps.org 321.271.6702

FloridaYards & Neighborhoods

www.FloridaYards.org 941.861.5000

Association of Native Plant Nurseries

www.afnn.org 877.352.2366

Sarasota County

www.scgov.net 941.861.5000

UF/IFAS Sarasota County Extension Service

<http://sarasota.extension.ufl.edu> 941.861.5000

Southwest Florida Water Management District

www.WaterMatters.org 352.796.7211



SARASOTA BAY ESTUARY PROGRAM

111 S. Orange Ave., Sarasota, FL 34236
www.sarasotabay.org · 941.955.8085

Sponsored in part by the
Manasota Basin Board of the

Southwest Florida
Water Management District

WATERMATTERS.ORG · 1-800-423-1476

Sarasota County
scgov.net | 941.861.5000 | TV19

LIVING on the WATER'S EDGE

A Homeowner's Guide to
Low Maintenance Landscaping
Along Seawalls,
Bayfronts and Canals



PLANT CATEGORIES — Low Maintenance Plants for Landscaping Along Your Seawall

TREES & PALMS



Cabbage palm
Sabal palmetto

40' ht.

H



Florida thatch palm
Thrinax radiata

20' ht.

H



Gumbo limbo
Bursera simaruba

30' - 60' ht.

H



Seagrape
Coccoloba uvifera

35' ht.

H



Southern red cedar
Juniperus virginiana

30' ht.

H

LARGE SHRUBS



Coco plum
Chrysobalanus icaco

15' ht.

H



Florida privet
Forestiera segregata

10' ht.

H



Firebush
Hamelia patens

5' - 15' ht.

L



Silver buttonwood
Conocarpus erecta
var. *sericea*

20' ht.

H



Simpson stopper
Myrcianthes fragrans

6' - 20' ht.

H

SMALL SHRUBS



Beautyberry
Callicarpa americana

4' - 6' ht. x 4' - 6' w.

L



Coontie
Zamia floridana

2' - 4' ht. x 3' - 4' w.

H



Necklace pod
Sophora tomentosa
var. *truncata*

6' ht. x 6' w

H



Saw palmetto
Serenoa repens

6' - 10' ht. x 6' - 10' w.

H



Wild coffee
Psychotria nervosa

4' - 10' ht. x 4' - 6' w.

L

WILDFLOWERS



Beach sunflower
Helianthus debilis
ssp. *vestitus*

1' ht. x 3' - 4' w.

H



Blanket flower
Gaillardia pulchella

1' ht. x 2' - 3' w.

M



Seaside goldenrod
Solidago sempervirens

3' - 4' ht. x 1' w.

M-H



Sea oxeye daisy
Borrchia frutescens

2' - 3' ht. x 2' - 3' w.

H



Tropical sage
Salvia coccinea

1' - 2' ht.

L

GROUNDCOVERS



Tampa verbena
Glandularia tampensis

6" - 8" ht. x 24" w.

M



Golden creeper
Ernodea littoralis

1' - 3' ht. x 4' - 6' w.

H



Perennial peanut
Arachis glabrata
Not Native - Turf replacement

6" ht.

L-M



Sea purslane
Sesuvium
portulacastrum

6" - 12" ht.

H



Sunshine mimosa
Mimosa strigillosa
Turf Replacement

6" - 9" ht. x 10' w.

L-M

GRASSES



Cordgrass
Spartina bakeri

2' - 5' ht. x 2' - 6' w.

H



Elliot's lovegrass
Eragrostis ellioti

1' - 2' ht. x 1' - 2' w.

L



Dwarf Fakahatchee
Tripsacum floridanum

4' - 6' ht. x 4' - 6' w.

L-M



Muhly grass
Muhlenbergia capillaris

1' - 4' ht. x 1' - 4' w.

M



Beach panicum
Panicum amarum

1' - 5' ht. x 1' - 5' w.

H

VINES



Coral honeysuckle
Lonicera sempervirens

L-M



Maypop passion vine
Passiflora incarnata

M



Railroad vine
Ipomoea pes-caprae

H



Skyblue clustervine
Jacquemontia
pentanthos

M



Wild allamanda
Pentalinon luteum
Do not confuse with
Yellow mandevilla

H

KEY TO SYMBOLS:

SOIL MOISTURE:

Dry (well drained) Moist Wet

SUN LIGHT:

Full Partial Shade

SALT SPRAY TOLERANCE:

L = Low M = Medium H = High

ATTRACTS BIRDS:

ATTRACTS BUTTERFLIES: